

## Welcome

Welcome to our newsletter, designed to keep you up to date with everything we are doing here at **MT Cold Storage Solutions**.

In this issue, we are focusing on the **Rapid Rise and Rapid Fold doors** from our industrial doors range.

## Who are we?



MTCSS, based in rural Worcestershire, offers a range of cold room equipment and industrial and refrigerated doors. We provide maintenance and spares supplies for cold rooms and refrigerated cabinets. We aim to bring our customers the very best solutions to meet their needs and to install them professionally and efficiently.

Our customers include farmers and growers, supermarkets, architects, refrigeration and installation contractors, maintenance companies, food manufacturers, major dairies and construction companies.

We are classed within the construction industry, and from that umbrella we operate within a number of markets including farming, growing, data storage, food manufacturing, environmental testing and food and drink retail.

## The 'rapid' rise of the Cornish pasty



Located in Cornwall, Warren's Bakery has served the public since 1860 and is the oldest pasty maker in the world. Warren's Bakery is among the best known makers of Cornish pasties and Cornish saffron cake in the country, with over 50 shops throughout South West England.

From its base in St Just near Lands End, every stage of baking and production is completed ready for delivery out to retailers. In late 2013 Warren's Bakery committed to an expansion aimed at increasing sales to larger retail markets. To assist in this upgrading, they contracted John Todd Refrigeration from Exeter to design and install new production areas to achieve the required BRC accreditation.

As an integral component of this upgrade Warren's Bakery installed two MTCSS Rapid Rise Doors.

The installation of these doors minimizes the risk of any cross contamination between differing production areas and includes an escape device to ensure the safety of Warren's Bakery employees in the event of power loss or other emergencies in the building.



now you see it,



now you don't!

**Jason Jobling, Director and Chief Operating Officer at Warren's Bakery stated:**

*"We are really pleased with the quality and performance of the Rapid Rise doors from MTCSS.*

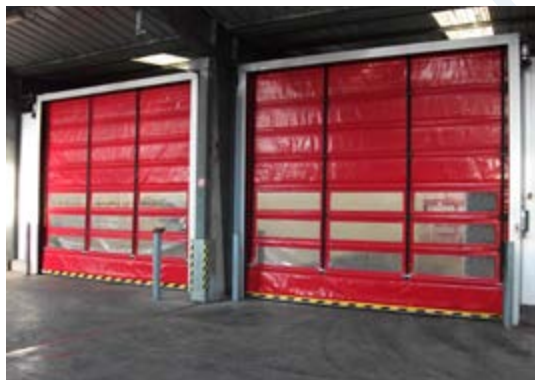
*The doors are reliable and quick to operate, assisting us in the production of the pasties, Saffron cakes, scones and other bakery goods that we make every day.*

*It's too early yet to analyse, but we also expect significant energy savings thanks to the doors' high speed opening and closing.*

*The MTCSS team were professional and helpful during the order and installation process, offering pertinent advice with attentive service."*

## Product focus – industrial doors

**MTCSS has the full range of industrial doors to suit every application, as well as a complete range of loading bay equipment.**



From installation, commissioning to on-going maintenance and maintenance agreements, MTCSS has the expertise to supply and install the industrial door to suit your needs. All doors can be activated from a number of systems including induction floor loops, radar motion detection, radio control, pull cord switches and authorised access systems.

**Our full range of doors for internal & external locations will:**

- Optimise traffic flow
- Provide pollution control including noise, dust, atmospheric and vermin
- Reduce heating bills
- Enhance the working environment, increasing comfort– and productivity.

**Here's what our customers have to say:**

*"I was very impressed with the professionalism and high standard of workmanship that MT Cold Storage Solutions provided as well as starting and completing the job within the time frame set out. This is very important to my planning and I would recommend MTCSS to anyone who asks."*

**Mark Blane, Operations Manager, Len Wright Salads Ltd**

**The MTCSS range of high speed doors are designed, manufactured and installed by skilled craftsmen to be fully compliant with all relevant European safety directives, particularly EN 13241-1.**

## Contact us

**We offer free, no obligation site surveys.**

**01886 833381**

**Mobile: +44 (0)790 2047162 Fax: +44 (0)1886 833624 Email: [info@mtcss.co.uk](mailto:info@mtcss.co.uk)**

**[www.mtcss.co.uk](http://www.mtcss.co.uk)**